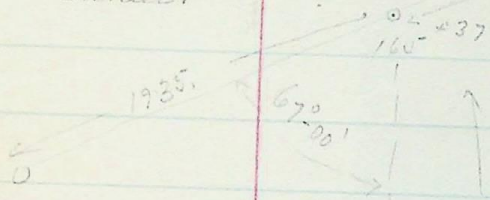


North or W. Branch
Canal.

166 + 59

729

(55)



670.

N 67.06. W.

47° 16'

159 + 47

Mag 7137° 36' W

152 + 12

N 19° 50' W.

926.

+ 21
150

78° 21'

728.

S 81° 49' W

H = Cr. Sec 2, 20

21 - 28 - 29

T. 6. S. R. 39 E
Base 200

1935
Vw: 17° 46' E

1935

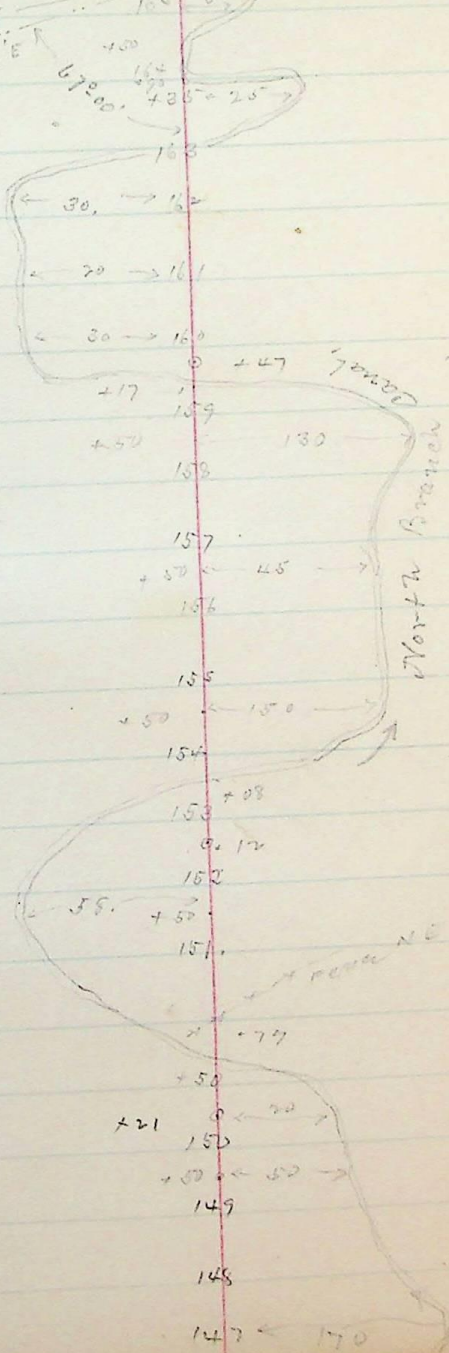
67.00

+ 59

720.5

(56)

14 Cr. Sec 20-21
20-21



North Branch Canal